



## **CLEXODAM-PRIME** (SOLVENT BASED BITUMEN PRIMER) AS PER IS: 3384-1986 and BS 4147-1980 CECPL-3001

### **OVERVIEW**

**CLEXODAM-PRIME** is a solvent based bituminous primer that seals pores in surfaces such as concrete and improves the adhesion of bituminous materials that are to be applied to the substrate. It is suitable for brush or spray application. It conforms to the requirement of IS: 3384-1986 and BS 4147-1980.

### **PROPERTIES**

- Excellent adhesion
- Chemical resistance
- Fast curing
- Multipurpose

### **AREAS OF USES**

Priming bituminous, concrete or masonry prior to laying membrane promotes bonding, whether self adhesive or otherwise.

- Inverted roofs & parapets
- Terraces, balconies & patios
- Bridges, tunnels & underpass etc.
- Underground car parks etc
- Medium to large roof slabs (Domestic, commercial, industrial)
- Swimming pools, water retaining structures, etc.
- Sunken slabs
- Ramp areas, airport aprons etc.

### **INSTRUCTIONS FOR USE**

The application temperature should be between 5°C to 45°C. Application procedures may vary slightly depending upon site conditions. The general recommended guidelines for the application of the waterproofing system are as follows:

#### **SURFACE PREPARATION**

The surface shall be cleaned thoroughly of all contaminants like dust, traces of curing compound, oil and grease. All surface imperfections and protrusions shall be removed and repaired. Structurally unsound and friable concrete must be removed and repaired with a suitable **CLEXOCRETE-CWC** concrete repair mortar.

#### **PRIMING**

Apply Solvent based **CLEXODAM-PRIME** @ 0.3-0.4L /Sqmt as per **ASTM D 41 & IS: 3384-1986 and BS 4147-1980** to a clean smooth and dry surface by brush, roller or spray.

For further details visit: [www.clexoengineering.com](http://www.clexoengineering.com)

October 2022 – Issued by CLEXO Technical Centre,

We are driving Waterproofing administrations supplier and waterproofing workers for hire in India. We give 5 and 10 years guarantee (relies upon the material quality) on our all administrations including new and old administrations from us.

**CLEXO ENGINEERING & CHEMICALS PVT. LTD.** has remained an expert waterproofing administrations worker for hire on both new developments

Allow the primer to dry prior to the application of the membrane. As the viscosity of the primer is low, it easily penetrates into the concrete pores which promote the adhesion between the membrane and the concrete surface. In addition to that the primer also acts as a binder for the dust which gets accumulated on the concrete surface even after cleaning.

**PRECAUTION:**

Mix/Use only the required quantity of material, which can be utilized within stipulated pot life to avoid solidification.

Wash all the tools and tackles with industrial solvent immediately after the application is completed.

**HEALTH & SAFETY**

Avoid prolonged contact with eyes and skin. Protective clothing such as gloves and goggles should be worn. See the relevant material safety data sheet for more information.

**PACKING & STORAGE**

CLEXODAM-PRIME is available in 20Kg, 50Kg Pails/Drum.

Shelf life is 12 months in unopened container. Store containers in a clean dry area protected from direct sunlight and extreme heat and cold.

**TECHNICAL DATA**

<b>Product</b>	A Solvent Base Bitumen Primer		
<b>Appearance</b>	Black		
<b>Cure Time</b>	30-60 Mins.		
<b>Chemical Resistance</b>	Excellent		
<b>Characteristics of Bitumen Primer</b>	<b>Range Test Methods</b>		
	<b>Min</b>	<b>Max</b>	
Softening Point(Ring & Ball), 0°C	100	120	IS: 1205-1978
Penetration at 25°C, 100g, 5 Sec, 0.1mm	10	20	IS: 1203-1978
Solubility in Trichloroethene, % by mass	99	-	IS: 1216-1978
<b>Characteristic of Primer</b>	<b>Range Test Methods</b>		
	<b>Min</b>	<b>Max</b>	
Flow time test (4mm flow cup at 25°C) Sec	35	65	IS: 1213-1978
Flash Point (Abel Closed Cup), min, °C	40	-	IS: 1209-1978
<b>Service Temperature</b>	+5°C to +45°C		

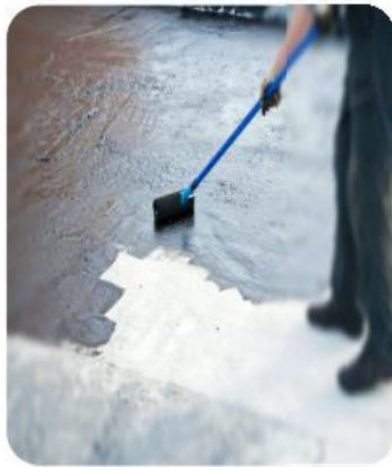
For further details visit: [www.clexoengineering.com](http://www.clexoengineering.com)

October 2022 – Issued by CLEXO Technical Centre,

We are driving Waterproofing administrations supplier and waterproofing workers for hire in India. We give 5 and 10 years guarantee (relies upon the material quality) on our all administrations including new and old administrations from us.

CLEXO ENGINEERING & CHEMICALS PVT. LTD. has remained an expert waterproofing administrations worker for hire on both new developments

## PICTURES/IMAGES AT GLANCE



## CLEXO ENGINEERING & CHEMICALS PVT. LTD



[An ISO 9001: 2015 Company]

SEC-C2, PLOT C-35, KASHMIRI ENCLAVE

TRONICA CITY GHAZIABAD -201102

CONTACT AT: +91-8266929206, +91-9990429206

Website: [www.clexoengineering.com](http://www.clexoengineering.com) Email: [clexoengineering@gmail.com](mailto:clexoengineering@gmail.com)

For further details visit: [www.clexoengineering.com](http://www.clexoengineering.com)

October 2022 – Issued by CLEXO Technical Centre,

We are driving Waterproofing administrations supplier and waterproofing workers for hire in India. We give 5 and 10 years guarantee (relies upon the material quality) on our all administrations including new and old administrations from us.

CLEXO ENGINEERING & CHEMICALS PVT. LTD. has remained an expert waterproofing administrations worker for hire on both new developments