

OVERVIEW

CLEXOKOTE-PRIME is water based modified bituminous primer which penetrates and activates the substrates. It also improves adhesion between the substrate and preformed bituminous sheet membranes. It resists low temperature cracking and also does not crack under the influence of strong sunlight.

PROPERTIES

- Excellent bond with concrete, screed mortar, porous stones and lime-concrete substrates
- Continuous, jointless surface and perfectly weatherproof.
- Bonds well with old bituminous substrates.
- Non-inflammable, inert, odorless and taintless.
- Effective activation of the surface to receive the waterproofing sheet membrane
- Easy application by brush, spray or roller.
- Will not flake or crack under winter frost.
- Specially designed for tropical conditions

AREAS OF USES

Priming bituminous, concrete or masonry prior to laying membrane promotes bonding, whether self-adhesive or otherwise.

- Inverted roofs & parapets
- Terraces, balconies & patios
- Bridges, tunnels & underpass etc.
- Medium to large roof slabs (Domestic, commercial, industrial)
- Water retaining structures, etc.
- Sunken slabs
- Ramp areas, airport aprons etc.

INSTRUCTIONS FOR USE

The application temperature should be between 5°C to 45°C. Application procedures may vary slightly depending upon site conditions. The general recommended guidelines for the application of the waterproofing system are as follows:

SURFACE PREPARATION

The surface shall be cleaned thoroughly of all contaminants like dust, traces of curing compound, oil and grease. All surface imperfections and protrusions shall be removed and repaired. Structurally unsound and friable concrete must be removed and repaired with a suitable CLEXOCRETE-CWC concrete repair mortar.

PRIMING

Apply Solvent based **CLEXOKOTE-PRIME** @ 0.3-0.4L /Sqmt to a clean smooth and dry surface by brush, roller or spray. Allow the primer to dry prior to the application of the membrane. As the viscosity of the primer is low, it easily penetrates into the concrete pores which promote the adhesion between the membrane and the concrete surface. In addition to that the primer also acts as a binder for the dust which gets accumulated on the concrete surface even after cleaning.

APPLICATION PROCEDURE:-

CLEXOKOTE-PRIME is to be applied manually with the help of trowel to a smooth finish as per the following procedure.

- Remove all dirt and dust by using wire brush and hand blowers.
- Dilute the **CLEXOKOTE-PRIME** to a light consistency to use it as primer by adding 40% water. The surface should be allowed to dry and turned into black surface.
- After priming, apply **CLEXOKOTE-PRIME** slightly diluted (add 10% water max.) @ 1.5kg/sqm and allow the emulsion to get dry and brown colour turned into black.
- Once the **CLEXOKOTE-PRIME** is set then the coarse may be spread over the surface.

PRECAUTION:

Mix/Use only the required quantity of material, which can be utilized within stipulated pot life to avoid solidification.

Wash all the tools and tackles with industrial solvent immediately after the application is completed.

HEALTH & SAFETY

Avoid prolonged contact with eyes and skin. Protective clothing such as gloves and goggles should be worn. See the relevant material safety data sheet for more information.

PACKING & STORAGE

CLEXOKOTE-PRIME is available in 20Kg, 50Kg Pails/Drum.

Shelf life is 12 months in unopened container. Store containers in a clean dry area protected from direct sunlight and extreme heat and cold.

TECHNICAL DATA

Product	A Water Base Bitumen Primer	
Appearance	Brownish/Black	
Cure Time	30-60 Mins.	
Chemical Resistance	Excellent	
Softening Point	70-80°C	
Water Content Percentage	45-50 %	
P.H Value	4-6	
Residue on 100 mesh	0.5% max	
Service Temperature	+5°C to +45°C	

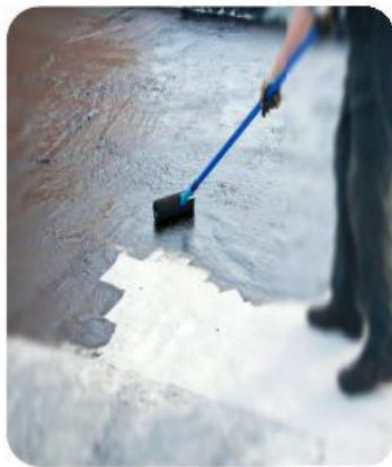
For further details visit: www.clexoengineering.com

October 2022 – Issued by CLEXO Technical Centre,

We are driving Waterproofing administrations supplier and waterproofing workers for hire in India. We give 5 and 10 years guarantee (relies upon the material quality) on our all administrations including new and old administrations from us.

CLEOX ENGINEERING & CHEMICALS PVT. LTD. has remained an expert waterproofing administrations worker for hire on both new developments

PICTURES/IMAGES AT GLANCE



CLEXO ENGINEERING & CHEMICALS PVT. LTD



[An ISO 9001: 2015 Company]

SEC-C2, PLOT C-35, KASHMIRI ENCLAVE

TRONICA CITY GHAZIABAD -201102

CONTACT AT: +91-8266929206, +91-9990429206

Website: www.clexoengineering.com Email: clexoengineering@gmail.com

For further details visit: www.clexoengineering.com

October 2022 – Issued by CLEXO Technical Centre,

We are driving Waterproofing administrations supplier and waterproofing workers for hire in India. We give 5 and 10 years guarantee (relies upon the material quality) on our all administrations including new and old administrations from us.

CLEXO ENGINEERING & CHEMICALS PVT. LTD. has remained an expert waterproofing administrations worker for hire on both new developments