



Life of Construction

CLEXOPU-LCK

(LIQUID APPLIED PU BASED ELASTOMERIC
WATERPROOFING COATING) CECPL-1003

OVERVIEW

CLEXOPU-LCK is a single component liquid applied coating. CLEXOPU-LCK is high performance, applied hybrid polyurethane modified bituminous elastomeric waterproofing membrane. CLEXOPU-LCK when applied on a surface, gives a continuous monolithic film which is rubbery and elastic in nature. CLEXOPU-LCK is UV stable heat reducer in nature, it can be left exposed if use in Aluminum/ White Colour. It conforms to ASTM C-836 and application done conforming to C-898.

PROPERTITES

- Single Component, Cold Applied and Highly Elongation Rubber like Membrane.
- No mixing or heating required. Save labour coat.
- Fast drying, easy to apply by brush, spray or rollers and High flexibility.
- Ensures durable bond• & resists peeling, and chipping hence lasts longer.
- Excellent crack bridging capacity .
- Structure life and durability is increased.
- Leading to early completion and time saving.
- Lightweight coating with joint free seal.
- Very good bonding to damp surfaces.
- Excellent bonding to substrate such as concrete, masonry, wood, metal, plastic, etc.

AREAS OF USES

The high elasticity, excellent bond strength with concrete and other substrates, low water permeability of CLEXOPU-LCK makes it ideal membrane coating for a wide range of water/ vapour proofing application such as:

- CLEXOPU-LCK is applied for waterproofing of roof slabs, terraces, balconies, patios.
- Waterproofing under terrazzo or tiles floors.
- Waterproofing of foundation, basements, lift pits.
- Sewage work and sunken portions.
- Tunnels and subway system.
- Parking garages, shopping mall, plaza areas, bridge decks.

For further details visit: www.clexoengineering.com

October 2022 – Issued by CLEXO Technical Centre,

We are driving Waterproofing administrations supplier and waterproofing workers for hire in India. We give 5 and 10 years guarantee (relies upon the material quality) on our all administrations including new and old administrations from us.

CLEXO ENGINEERING & CHEMICALS PVT. LTD. has remained an expert waterproofing administrations worker for hire on both new developments

INSTRUCTIONS FOR USE

The application temperature should be between 5°C to 45°C. Application procedures may vary slightly depending upon site conditions. The general recommended guidelines for the application of the waterproofing system are as follows:

SURFACE PREPARATION

The surface shall be cleaned thoroughly of all contaminants like dust, traces of curing compound, oil and grease. All surface imperfections and protrusions shall be removed and repaired with 'V' grooves filling and sealed with CLEXODAM-SEAL/CLEXOPOLY-SEAL/CLEXOPU-CLAMP-1K, Structurally unsound and friable concrete must be removed and repaired with a suitable CLEXOCRETE-CWC concrete repair mortar.

DETAILED APPLICATION PROCEDURE

- Prime the surface with CLEXOPU-PRIME. @0.2.5-0.4kgs/Sqmt/Coat. Depending on surface.
- After the primer coat is completely dried apply two coats of CLEXOPU-LCK. It is recommended to apply the 2-3 coats after the previous coat is totally cured. @ 0.5kgs/Sqmt/Coat.
- For better results use CLEXO GLASS FIBRE MESH/REINFORCEMENT embedded into 1st coat of CLEXOPU-LCK while still wet.
- CLEXOPU-LCK could be diluted up till 10 – 15% for 1st coat & 2nd coat and 5 – 10 % for 3rd coat to make material workable and get the desired coverage.
- Protection by non-woven polypropylene geo-textile membrane of 120 gsm. And Screed/PP/Tiles or more.
- All brushes and tools should be cleaned by water immediately after use.

PRECAUTION:

Mix only the required quantity of material, which can be utilized within stipulated pot life to avoid solidification. Wash all the tools and tackles with industrial solvent immediately after the application is completed.

HEALTH & SAFETY

As with all chemicals, caution should always be exercised. avoid prolonged contact with eyes and skin. Protective clothing such as gloves and goggles should be worn. See the relevant material safety data sheet for more information.

PACKING & STORAGE

CLEXOPU-LCK is available in 5kg & 20kg plastic pails. Shelf life is 6 months in unpinned container. store containers in a clean dry area protected from direct Sunlight and extreme heat and cold.



CLEXO
Life of Construction

CLEXOPU-LCK

(LIQUID APPLIED PU BASED ELASTOMERIC
WATERPROOFING COATING) CECPL-1003

TECHNICAL DATA

| | | | |
|------------------------------------|--------------------------------------------------------------|------------------------------------------|-------------------------|
| Product | Liquid Applied Polyurethane Modified Liquid Coating | | |
| Base | Liquid, PU Modified Elastomeric Coating | | |
| Appearance | Black | | |
| Consistency | Paste like, Thixotropic | | |
| Solids Content By Weight | 80± 5% (ASTM C-836 & C-898) | | |
| Elongation % | 800±50 % (ASTM D-412) | | |
| Specific Gravity | 1.18±0.2 @20°C | | |
| Tear Strength (N/Mm) | >15(ASTM D 624) | | |
| Tensile Strength | 3.1-4Mpa depending upon reinforcement provided. (ASTM D-412) | | |
| Hardness, Shore A | >50 (ASTM D2240) | | Density 1.5±0.05 |
| Abel Closed Cup Flash Point | 56°C | Viscosity | Viscous |
| Full Cure Time | 72 Hrs. | Chemical Resistant | Good |
| Solar Reflection | No | Cracking on Weathering | >500HrsNo |
| Approximate Drying Time | 6-8 hrs. | Service Temperature +5°C to +45°C | |

For further details visit: www.clexoengineering.com

October 2022 – Issued by CLEXO Technical Centre,

We are driving Waterproofing administrations supplier and waterproofing workers for hire in India. We give 5 and 10 years guarantee (relies upon the material quality) on our all administrations including new and old administrations from us.

CLEXO ENGINEERING & CHEMICALS PVT. LTD. has remained an expert waterproofing administrations worker for hire on both new developments

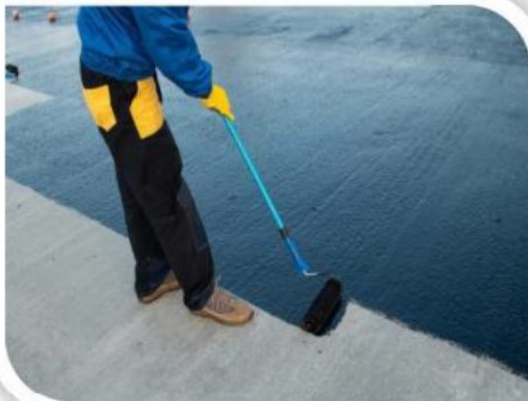


Life of Construction

CLEXOPU-LCK

(LIQUID APPLIED PU BASED ELASTOMERIC
WATERPROOFING COATING) CECPL-1003

PICTURES/IMAGES AT GLANCE



CLEXO ENGINEERING & CHEMICALS PVT. LTD



[An ISO 9001: 2015 Company]

SEC-C2, PLOT C-35, KASHMIRI ENCLAVE
TRONICA CITY GHAZIABAD -201102

CONTACT AT: +91-8266929206, +91-9990429206

Website: www.clexoengineering.com Email: clexoengineering@gmail.com

For further details visit: www.clexoengineering.com

October 2022 – Issued by CLEXO Technical Centre,

We are driving Waterproofing administrations supplier and waterproofing workers for hire in India. We give 5 and 10 years guarantee (relies upon the material quality) on our all administrations including new and old administrations from us.

CLEXO ENGINEERING & CHEMICALS PVT. LTD. has remained an expert waterproofing administrations worker for hire on both new developments