



CLEXO
Life of Construction

CLEXOPU-PRIME (SPECIAL POLYMERIZED PRIMER FOR PU COATING) CECPL-1004

OVERVIEW

CLEXOPU-PRIME is a clear/black, single pack, moisture cure polyurethane coating. CLEXOPU-PRIME is a single component adhesion promoter primer and sealer for use where toughness, chemical resistance, fast curing, and printability are required.

PROPERTIES

- No mixing or heating required.
- Save labour cost.
- Fast drying, easy to apply by brush, spray or rollers and High flexibility.
- Structure life and durability is increased.
- Leading to early completion and time saving.
- Excellent bonding.
- Chemical Resistance.
- Multipurpose uses.

AREAS OF USES

CLEXOPU-PRIME is used before CLEXOPU-LCK coating on the following structure.

- CLEXOPU-PRIME is applied for waterproofing of roof slabs, terraces, balconies, patios.
- Waterproofing under terrazzo or tiles floors.
- Waterproofing of foundation, basements, lift pits.
- Sewage work and sunken portions.
- Tunnels and subway system.
- Parking garages, shopping mall, plaza areas, bridge decks.

INSTRUCTIONS FOR USE

The application temperature should be between 5°C to 45°C. Application procedures may vary slightly depending upon site conditions. The general recommended guidelines for the application of the waterproofing system are as follows:

SURFACE PREPARATION

The surface shall be cleaned thoroughly of all contaminants like dust, traces of curing compound, oil and grease. All surface imperfections and protrusions shall be removed and repaired with 'V' grooves filling and sealed with **CLEXODAM-SEAL/CLEXOPOLY-SEAL/CLEXOPU-CLAMP-1K**. Structurally unsound and friable concrete must be removed and repaired with a suitable **CLEXOCRETE-CWC** concrete repair mortar.

For further details visit: www.clexoengineering.com

October 2022 – Issued by CLEXO Technical Centre,

We are driving Waterproofing administrations supplier and waterproofing workers for hire in India. We give 5 and 10 years guarantee (relies upon the material quality) on our all administrations including new and old administrations from us.

CLEO ENGINEERING & CHEMICALS PVT. LTD. has remained an expert waterproofing administrations worker for hire on both new developments

PRIMING

Apply Solvent based **CLEXOPU-PRIME** @ 0.3-0.5L /Sqmt to a clean smooth and dry surface by brush, roller or spray. Allow the primer to dry prior to the application of the PU Coating. As the viscosity of the primer is low, it easily penetrates into the concrete pores which promote the adhesion between the membrane and the concrete surface. In addition to that the primer also acts as a binder for the dust which gets accumulated on the concrete surface even after cleaning.

PREPARATION:

Concrete surfaces must be cured for at least 28 days.

Surface must be dry and free of grease, oils and other contaminants.

Large areas can be coated using a rubber squeegee.

Apply quickly and liberally by good quality brush, roller or squeegee. **CLEXOPU-PRIME** may be also sprayed.

If two coats of PU Primer are required, apply within 4-16 hours, however ensure the first coat has sufficiently hardened to avoid lifting of the coating.

PRECAUTION:

Mix only the required quantity of material, which can be utilized within stipulated pot life to avoid solidification.

Wash all the tools and tackles with industrial solvent immediately after the application is completed.

HEALTH & SAFETY

As with all chemicals, caution should always be exercised. avoid prolonged contact with eyes and skin.

Protective clothing such as gloves and goggles should be worn. See the relevant material safety data sheet for more information.

PACKING & STORAGE

CLEXOPU-PRIME is available in 5kg & 20kg plastic pails. Shelf life is 6 months in unopened container. store containers in a clean dry area protected from direct Sunlight and extreme heat and cold.

TECHNICAL DATA

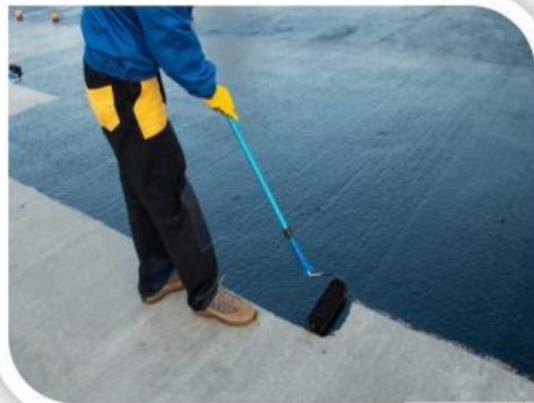
Product	Polyurethane Primer
Colour	Black/ Clear
Drying Time	60-120 Mins.
Material Consumption	0.3-0.5kg/ m2
Chemical resistance	Excellent
Service Temperature	+15°C to +45°C
Packaging	5kg and 20kg plastic pails.



CLEXO
Life of Construction

CLEXOPU-PRIME
(SPECIAL POLYMERIZED PRIMER FOR PU
COATING)
CECPL-1004

PICTURES/IMAGES AT GLANCE



CLEXO ENGINEERING & CHEMICALS PVT. LTD



[An ISO 9001: 2015 Company]

SEC-C2, PLOT C-35, KASHMIRI ENCLAVE
TRONICA CITY GHAZIABAD -201102

CONTACT AT: +91-8266929206, +91-9990429206

Website: www.clexoengineering.com Email: clexoengineering@gmail.com

For further details visit: www.clexoengineering.com

October 2022 – Issued by CLEXO Technical Centre,

We are driving Waterproofing administrations supplier and waterproofing workers for hire in India. We give 5 and 10 years guarantee (relies upon the material quality) on our all administrations including new and old administrations from us.

CLEXO ENGINEERING & CHEMICALS PVT. LTD. has remained an expert waterproofing administrations worker for hire on both new developments